



Gilmore Court, Belgrave South
PO Box 231 Belgrave VIC 3160
Ph: 9754 2274
Fax: 9752 6363
bsch@netspace.net.au

Weekend Extend Activity Blurbs

July – December 2018

VFL Match

Saturday, 14th of July
10:00 PM – 4:00 PM
\$185



The game we are going to see is between the Richmond Tigers and North Melbourne Kangaroos. These teams are the reserves for the AFL Clubs so you will see plenty of AFL contracted players out there and at a suburban ground like Holm Park in Beaconsfield you can get up close to see all of the action. Both teams are doing well this year. It should be a great clash and we can jump on the ground between quarters to have a kick!

Shannon Noll

Friday, 21st of July
6:00 PM – 12:00 AM
\$180

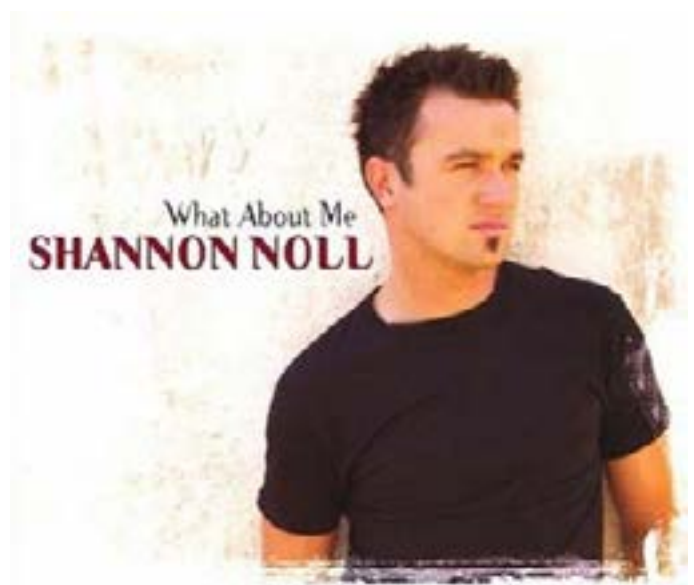
Shannon Noll is back at the York on Lilydale. He has been an icon of Australian music ever since he shot to fame on the talent show Australian Idol. He will be there singing all of his hits. Our group saw him last night and it was thoroughly enjoyed by all.



Pete Murray

Friday, 27th of July
6:00 PM – 12:00 AM
\$190

Pete Murray is back in town. He is another solo male artist who dominated the Australian music charts for a decade since the release of his debut album 'Feeler' in 2003. A former NRL player, the man had an inspiring journey transforming himself from elite athlete to an iconic singer/song writer of his generation. He is a very cool guy, you will know his songs and he puts on a great show.



Melbourne Zoo

Saturday, 4th of August

10:00 AM – 4:00 PM

\$190

We're going to the zoo and you can come too! The Melbourne Zoo has changed a lot with lots of new enclosures being built with the Elephants and Orangutans being the exhibits with the most improvement. Definitely worth a look.



Ice Hockey

Friday, 17th of August

5:30 PM – 11:30 PM

\$185

We're going back to the ice hockey to check out the local derby between the Melbourne Ice and the Melbourne Mustangs. The venue is the O'Brien Group Arena in the docklands. It should be a great spectacle seeing some of Australia's best players in a sport that doesn't get a lot of coverage in this country.



Virtual Golf

Saturday, 25th of August

10:00 AM – 4:00 PM

\$185

One of the great past times is playing golf. This golf is a great option for when the weather is cold and wet because it is completely indoors and you don't have to go far to collect your ball! Using modern technology this game of virtual golf is good for sports people and gamers alike. Skill and experience is not required. Bring your own enthusiasm.



Lunch and Movies

Saturday, 15th of September

12:00 AM – 6:00 PM

\$185

A common social activity for the colder months. There are usually good movies showing during school holidays so bring your suggestions of where to dine and what to see.



Tesselaar's Tulip Festival

Saturday, 6th of October

10:00 AM – 4:00 PM

\$180

The Tulip Farm is in Silvan and has an annual festival showcasing the tulips in full bloom with food and entertainment to keep us all amused. It's good to support local attractions like this and a good occasion for floristry enthusiasts and photographers alike to get to.



Phillip Island CAMP

Friday, 12th of October to Sunday, 14th of October

6:00 PM – 4:00 PM

\$1200

We have booked accommodation through Ripple n' Tonic again for our stay down at Phillip Island. However, this time there will be a major difference. In addition to the farmland accommodation they have inland, they now have a beach location that we have booked. The beach house has a limited number of beds so the group will be divided between the beach and the farm but be able to access both places throughout the day despite where each individual may sleep. Both houses are in Ventnor so quite close to each other. This should make for a very interesting weekend for those that been to Phillip Island before because activities will be very different.

Barefoot Bowls

Saturday, 27th of October

10:00 AM – 4:00 PM

\$180

Barefoot bowls is becoming increasingly popular. Bowling has always been popular with our groups but this version of bowls gets us outdoors where you can feel the grass against your toes. The Bowls Club is no longer just for old people with Barefoot Bowls now is fashion.



High Tea at Sky High

Sunday, 11th of November

10:00 AM – 4:00 PM

\$180

Sky High in Mount Dandenong is the highest point in the outer Melbourne region. It is home to amazing views, gardens and a maze to explore. High tea will feature lots of finger food to entertain the taste buds. What a pleasant way to spend your Remembrance Day.



Rhododendron Gardens

Saturday, 17th of November

10:00 AM – 4:00 PM

\$180

The Rhododendron Gardens are in full bloom in November. The spectacular colour of spring is something to behold by exploring the gardens whilst getting some exercise as the group walk up and down the hilly area. All that exercise is not without reward as we will then be heading to highly reputable Kelly's bar in Mount Dandenong for lunch.



Twenty20 Cricket

Sunday, 23rd of November

5:30 PM – 11:30 PM

\$180

International Twenty20 Cricket is back the Melbourne Cricket Ground with world number one India taking on the world number two team in Australia. The shortest format of the game is full of fireworks both on and off the field. Get there and be part of the atmosphere.



Strawberry Picking

Saturday, 1st of December

10:00 AM – 4:00 PM

\$180

This time of the year is strawberry picking season. Come along and pick a punnet for you, your friends or family. They don't get fresher than when self picked. Across the road is the Coldstream Brewery. The restaurant offers delicious food and there is often live music playing on weekends.



CAMP - Phillip Island

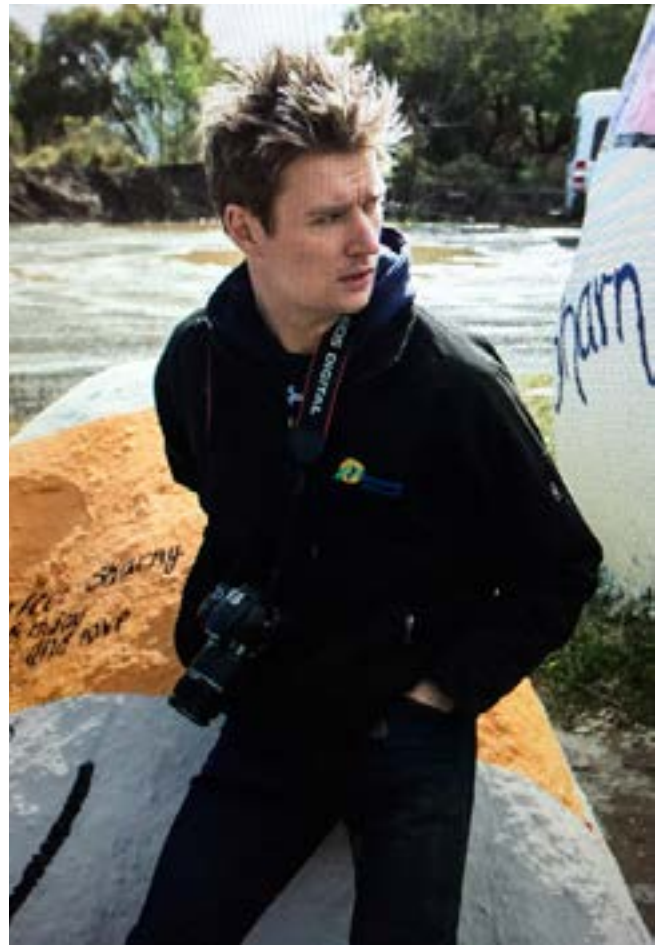
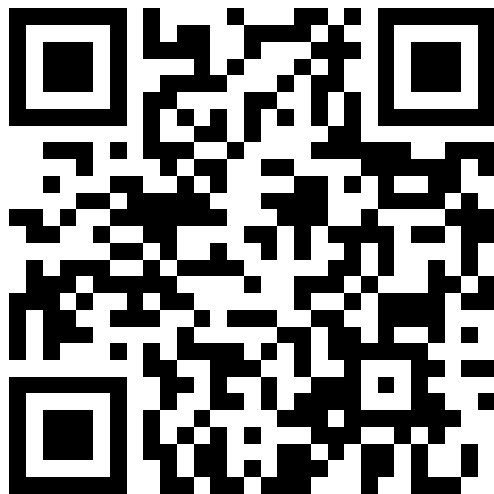
Friday, 14th of December to

Sunday, 16th of December

6:00 PM – 4:00 PM

\$1200

We have booked accommodation through Ripple n' Tonic again for our stay down at Phillip Island. However, this time there will be a major difference. In addition to the farmland accommodation they have inland, they now have a beach location that we have booked. The beach house has a limited number of beds so the group will be divided between the beach and the farm but be able to access both places throughout the day despite where each individual may sleep. Both houses are in Ventnor so quite close to each other. This should make for a very interesting weekend for those that been to Phillip Island before because activities will be very different. It is summer so bring your bathers!



Contact Graham Bergroth at
Belgrave South Community House
to book in and for more details.
0407 942 007
or
bsch-extend@netspace.net.au